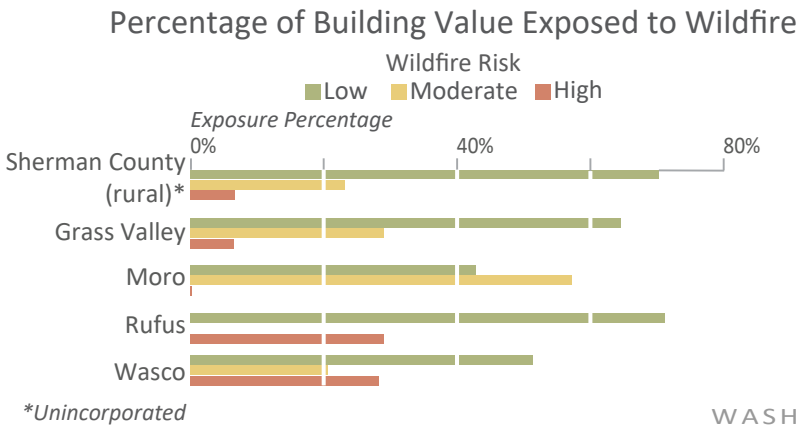


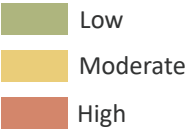


Wildfire Risk Map of Sherman County, Oregon

Wildfire Risk is categorized as Low, Moderate, and High and indicates the level of risk a location has to wildfire hazard. The Wildfire Risk data layer (Fire Risk Index) is derived from a combination of the Fire Threat Index (fire history and behavior) and the Fire Effects Index (infrastructure and assets).



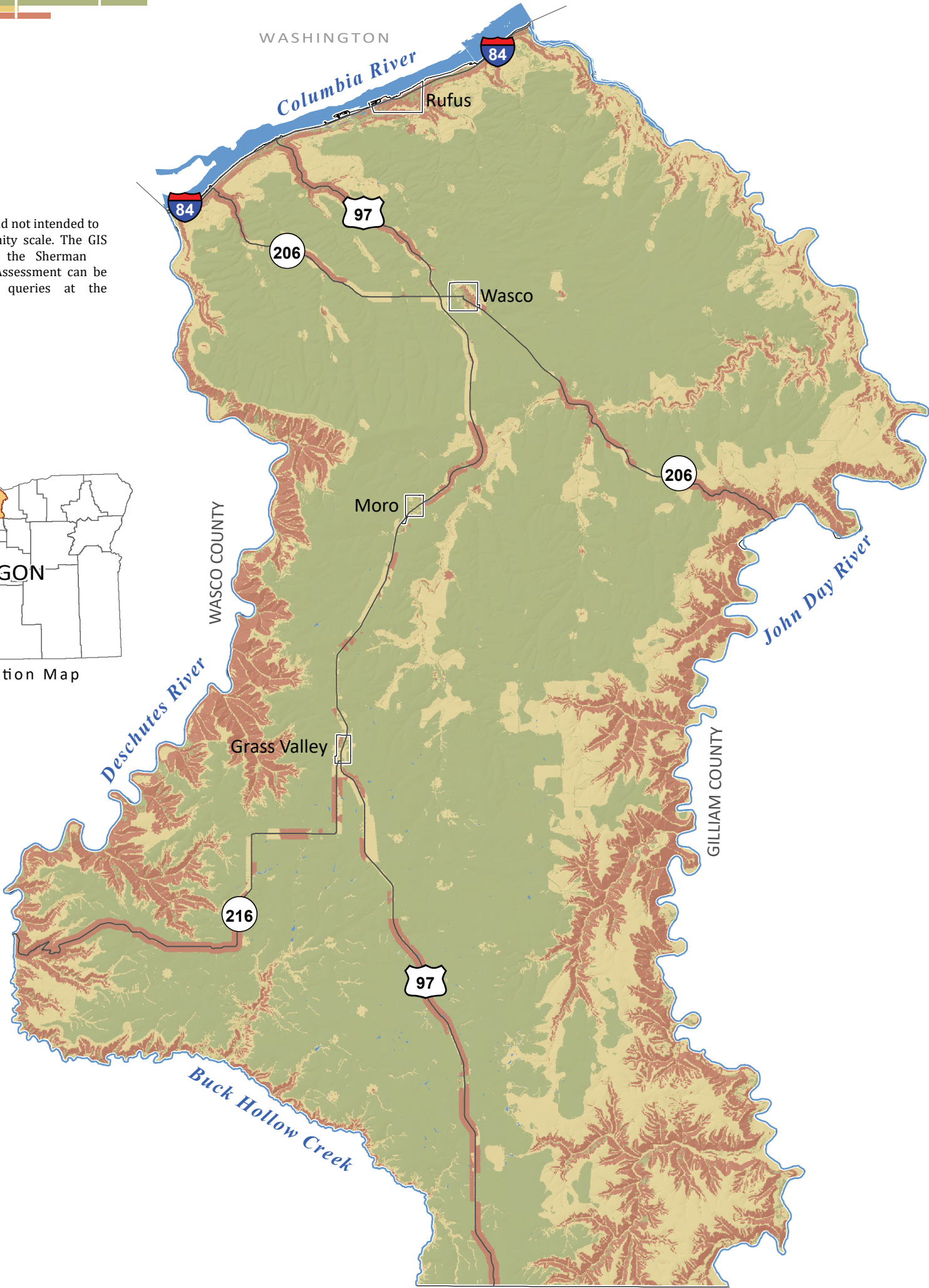
Wildfire Risk



This map is an overview map and not intended to provide details at the community scale. The GIS data that is published with the Sherman County Natural Hazard Risk Assessment can be used to inform regarding queries at the community scale.



Study Location Map



Data Sources:

Wildfire risk data: Oregon Department of Forestry (2013)
Roads: Oregon Department of Transportation (2014)
Place names: U.S. Geological Survey Geographic Names Information System (2015)
City limits: Oregon Department of Transportation (2014)
Basemap: U.S. Geological Survey and Oregon Lidar Consortium (2012)
Projection: NAD 1983 UTM Zone 10N
Software: Esri® ArcMap 10, Adobe® Illustrator CS6
Cartography by: Lowell Anthony, 2018

Disclaimer: This product is for informational purposes and may not have been prepared for or be suitable for legal, engineering, or surveying purposes. Users of this information should review or consult the primary data and information sources to ascertain the usability of the information. This publication cannot substitute for site-specific investigations by qualified practitioners. Site-specific data may give results that differ from the results shown in the publication. See the accompanying text report for more details on the limitations of the methods and data used to prepare this publication.

